

3500KG

Version: REV. 04

Serial No.: _____

Production Date: _____

USER'S MANUAL

ELECTRO-HYDRAULIC SCISSOR LIFT

TABLE OF CONTENTS

PACKING, TRANSPORTATION AND STORAGE.....	1
INTRODUCTION.....	2
1. DESCRIPTION OF THE MACHINE.....	4
2. SPECIFICATION.....	4
2.1 LIFT DIMENSION PICTURE.....	4
2.1 MAIN TECHNICAL PARAMETERS.....	4
2.2 INSTALLATION SCHEME FOR PARKING LIFT.....	6
2.3 TYPES OF VEHICLES SUITABLE FOR.....	6
2.4 MAXIMUM WEIGHT.....	6
2.5 THE MAX DIMENSION OF VEHICLE.....	6
3. SAFETY.....	7
4. INSTALLATION.....	11
5. ADJUSTMENTS.....	14
6. OPERATIONS.....	17
7. MAINTENANCE AND CARE.....	19
8. FAILURE AND RESOLUTIONS.....	19
APPENDIX 1 HYDRAULIC PRINCIPLE DIAGRAM.....	21
APPENDIX 2 HOSE CONNECTION DIAGRAM.....	22
APPENDIX 3 EXPLOSIVE DIAGRAM.....	23
WARRANTY.....	25

PACKING, TRANSPORTATION AND STORAGE



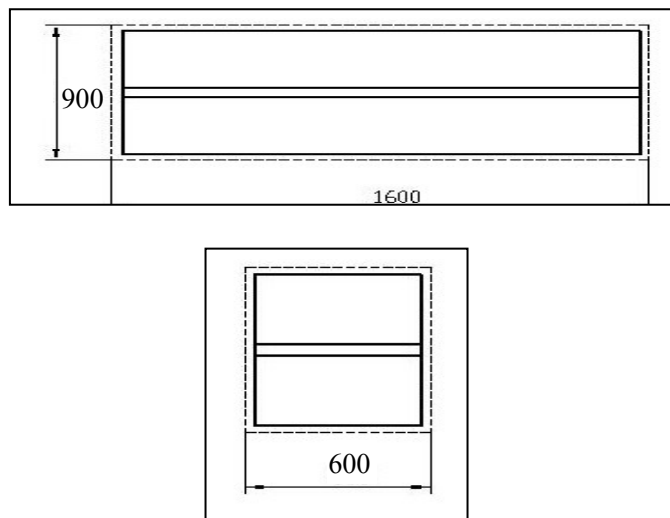
ALL PACKING, LIFTING, HANDLING, TRANSPORT AND UNPACKING OPERATIONS ARE TO BE PERFORMED EXCLUSIVELY BY EXPERT PERSONNEL.

PACKING

Standard equipment

Main and sub beam (1#, 2# CTN), control box (3# CTN), oil line and accessory (4# CTN), total is 4 pieces.

Packing dimension picture (Picture 1)



Picture 1. Packing Dimension

TRANSPORT



Packing can be lifted or moved by lift trucks, cranes or bridge cranes. In case of slinging, a second person must always take care of the load, in order to avoid dangerous oscillations.

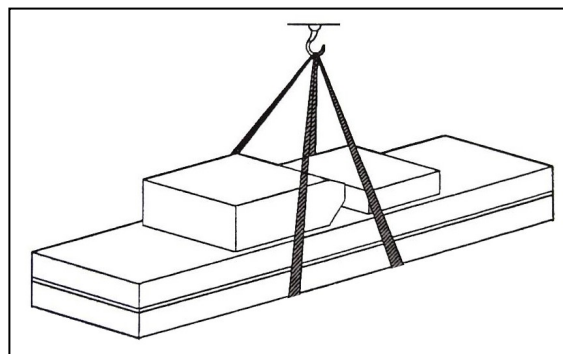
During loading and unloading operation, goods must be handled by vehicles or ships.

At the arrival of the goods, verify that all items specified in the delivery notes are included. In case of missing parts, possible defects or damage due to transport operations.

If finding missing parts, possible defects or damage due to transport, one should examine damaged cartons according to ***Packing List*** to verify the condition of damaged goods and missing parts, also the person in charge or the carrier must be immediately informed.\

The machine is heavy goods! Don't take manpower load and unload and transporting way into consideration, the safety of working is important.

Furthermore, during loading and unloading operation goods must be handled as shown in the picture. (Picture 2)



Picture 2. Goods-lifted

STORAGE

- The machine equipment should be stocked in the warehouse, if stocked outside should do the disposal well of waterproof.
- Use box truck in the process of transport, use container storage when shipping.
- The control box should be placed perpendicularly during the transport; and prevent other goods from extrusion.
- The temperature for machine storage: -25°C-55°C

MANUAL INSTRUCTION



This manual has been prepared for workshop personnel expert in the use of the lift operator and technicians responsible for routine maintenance fitter.

Workers should read the *User's Manual* carefully before carrying out any operation with the lift. This manual contains important information regarding:

- The personal safety of operators and maintenance workers.
- Lift safety,
- The safety of lifted vehicles.

CONSERVING THE MANUAL



This manual is an integral part of the lift.

The manual must be kept in the vicinity of the lift, so that the operator and maintenance staff must be able to locate and consult the manual quickly and at any time.

Attentively reading Chapter 3, which contains important information and safety warning, is particularly recommended.

The lift is designed and manufactured according to European Standard.



The lifting, transport, unpacking, assembly, installation, starting up, initial adjustment and testing, extraordinary maintenance, repair, overhauls, transport and dismantling of the lift must be performed by specialized personnel from the licensed dealer authorized by the manufacturer.

The manufacturer declines all responsibility for injury to persons or damage to vehicles or objects when any of the above mentioned operations has been performed by

unauthorized personnel or when the rack has been subject to improper use.



This manual indicates: the operative and safety aspects that may prove useful to the operator and maintenance worker. For better understanding the structure and operation of the lift and for best use of the same, workers must read the User's Manual carefully before carrying out it.

In order to understand the terminology used in this manual, the maintenance and repair activities, the ability to interpret correctly the drawings and descriptions contained in the manual and be the country in which the machine has been installed.

The same applies to the maintenance and the maintenance fitter must also possess specific and specialized knowledge both in mechanical and engineering field.

OPERATOR: person authorized to use the lift.

MAINTENANCE FITTER: person authorized for routine maintenance of the lift.



Manufacturer owns the right to make little change for the manual owing to the improvement of technology.

1. DESCRIPTION OF THE MACHINE

Machine Application:

MS350 small platform profile scissor lift can lift each kind of vehicle whose weight is less than 3500kg, suitable for use in vehicle tests, maintenance and caring for automobiles, which is particularly suitable for use in the basement or on the floor, without construction and hole.

Structure Features:

- Use hidden and thin scissor structure, dispense with construction and ground hole, the occupation is small.
- Independent control box, low-voltage controlling, good security.
- Hydraulic cubage and in-phase cylinder, the synchronization of platform.
- Own the double safety equipment of hydraulic lock and mechanical pawl, on the safe side.
- Of photocell controlling the level and lowering down buzzer.
- Own protection of safety valve and burst-proof equipment for hydraulic failure and over loading. So when the oil pipe bursts, the machine will not fall quickly.
- Use high quality hydraulic or electric element parts made in Italy, Germany, Japan and so on.
- Own manual lowering operation when the power is cut.

Equipment:

- Machine basement (The position and space of equipment installation)
- Machine frame (The main structure of lift and insurance institution)
- Control box (Machine-controlled part)

Basic structure:

The machine basement is made of cement and concrete.

Frame:

Make of steel connecting rod, main lifting platform, sliding board, pneumatic double tooth, hydraulic oil tank.

Control box:

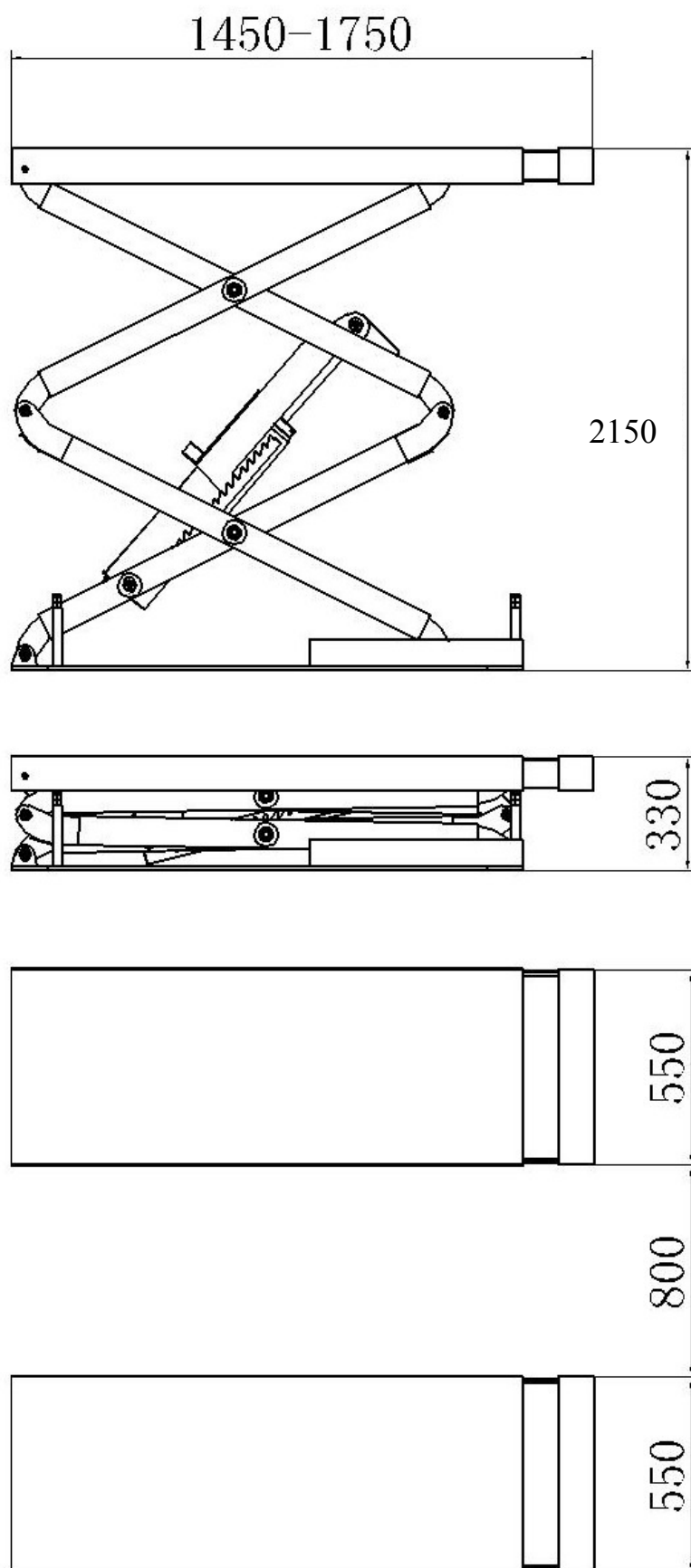
Under the control box is hydraulic oil tank and hydraulic pump, valve and other control system. On the control box is electrical system.



Scissor lift is designed and built to lift all kinds of vehicles, all other use are unauthorized. In particular, the lift is not suitable for washing spray work. And not lift the vehicle whose weight exceeds the maximum weight.

2. SPECIFICATIONS

Lift Dimension Picture:



Drive Mode	Electro-hydraulic	
Capacity	3500kg	
Max. Lifting Height	2150mm	
Min. Height	330mm	
Platform Length	1450-1750mm	
Platform Width	550mm	
Lifting Time	≤50s	
Lowering Time	≤50s	
Overall Length	1940mm	
Gross Weight	700kg	
Power Supply	AC 400V or 230V±5% 50/60Hz	
Power	2.2kw	
Hydraulic Oil	14L corresponds to wearable hydraulic	
Gas Pressure	6-8kg/cm2	
Working Temperature	5-40℃	
Working Humidity	30-95%	
Noise Level	< 76db	
Installation Altitude	Height above sea level≤1000M	
Storage Temperature	-25℃~55℃	

Motor

Type.....	Y90L
Max. Power.....	2.2kw
Max. Voltage.....	AC 400 or 230V ±5%
Max Electricity.....	400V:5A
	230V:10A
Max Frequency	50/60Hz
Poles.....	4
Speed.....	1450 r.p.m./min.
Building Shape.....	B14
Insulation Class.....	F

Pump

Type.....	P4.3
Model.....	Gear Pump
Max. Flux.....	4.3cc/r
Joint Type.....	Joint Overfull Valve
Continuous Working Pressure.....	210bar
Intermittent Working Pressure.....	150~300bar

Inject 20 liters of wearable hydraulic oil into the oil tank.

When connecting the motor refer to the enclosed diagrams, and the motor direction is clockwise.

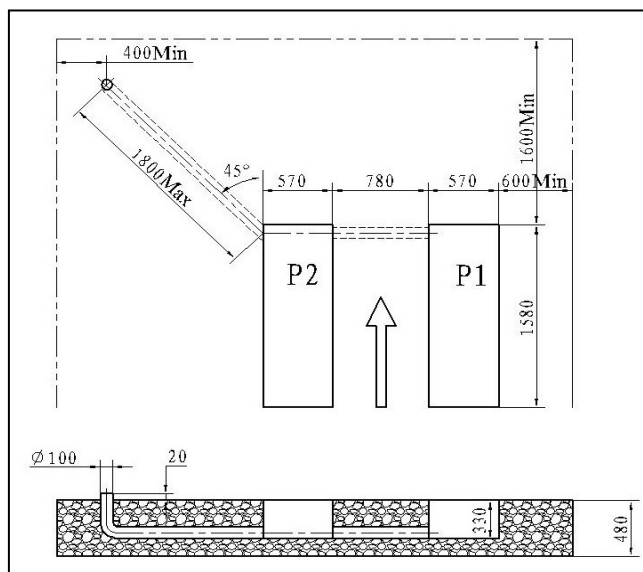
INSTALLATION SCHEME FOR SCISSOR LIFT

Requirements:

- Concrete type 425#, the period of desiccation is 15 days
- Clean the basic layer, thickness of concrete $\geq 150\text{mm}$, the leveling of whole length $\leq 10\text{mm}$

Supply at the same time:

- Connect to the power supply jack of control box (400V or 230V 15A)
- Connect to the compressed air-entering pipe of control box ($\phi 8 \times 6\text{mm}$)



Picture 3



Note: The foundation of the end of the lift platform P1, P2 is the structure of concrete. When the thickness of inside level ground is less than 150mm, the end of P1, P2 should be irrigated the acreage: 2500×2500mm and thickness of concrete $\geq 150\text{mm}$.

The basic thickness of concrete and leveling are keys, shouldn't egregiously expect the ability of level adjustment of machine-self.

TYPES OF VEHICLES SUITABLE FOR:

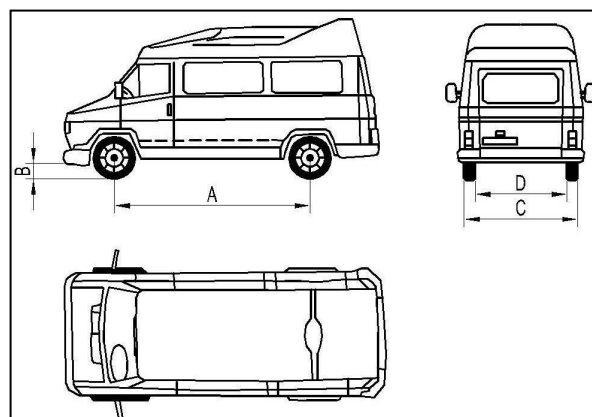
This lift are suitable for virtually all vehicles with total weight and with dimensions not exceeding the below data.

MAXIMUM WEIGHT

Maximum weight not exceed than 3500Kg

THE MAX DIMENSION OF VEHICLE:

The following diagrams illustrate criteria used to define the operating limits of the lift.



Picture 4

	3.5 T	
	Min. (mm)	Max. (mm)
A	1900	4000
B	100	
C		1900
D	900	



THE LOWER PARTS OF THE VEHICLE UNDERBODY COULD INTERFERE WITH STRUCTURAL PARTS OF THE LIFT, TAKE PARTICULAR PARTS OF THE SPORTS-CAR.

The lift will also handle customized or non-standard vehicles provided they are within the maximum specified carrying capacity.

Also the personnel safety zone must be defined in relation to vehicle with unusual dimensions.

3. SAFETY



Read this chapter carefully and completely since important information for the safety of the operator or others in case of improper use of the lift is included.

In the following text there are clear explanations regarding certain situations of risk or danger that may arise during the operation or maintenance of the lift, the safety device installed and the correct use of such systems, residual risks and operative procedures to use (general specific precautions to eliminate potential hazards).



Lifts are designed and built to lift vehicles and hold them in the elevated position in an enclosed workshop. All other uses of the lifts are unauthorized. In particular, the lifts are not suitable for:

- Washing spray work;
- Creating raised platforms for personnel or lifting personnel;
- Use as a press for crushing purposes;
- Use as elevator;
- Use as a lift jack for lifting vehicle bodies or changing wheels.



The manufacturer is not liable for any injury to persons or damage to vehicles and other property caused by the incorrect and unauthorized use of the lifts.

During lifting and descent, the operator must remain in the control station as the diagrams illustrated.

As the diagrams illustrated: The presence of persons inside the danger zone indicated is strictly prohibited. During operations persons are admitted to the area beneath the vehicle only when the vehicle is already in the elevated position, when the platforms are stationary, and when the

mechanical safety devices are firmly engaged (e.g.: the safety gear is completely locked).



DO NOT USE THE LIFT WITHOUT PROTECTION DEVICES OR WITH THE PROTECTION DEVICES INHIBITED.

FAILURE TO COMPLY WITH THESE REGULATION CAN CAUSE SERIOUS INJURY TO PERSONS, AND IRREPAIRABLE DAMAGE TO THE LIFT AND THE VEHICLE BEIN LIFED.

GENERAL PRECAUTIONS



The operator and the maintenance fitter are required to observe the prescriptions of safety regulation in force in the country of installation of the lift.

Furthermore, the operator and maintenance fitter must:

- Always work in the stations specified and illustrated in this manual;
- Never remove or deactivate the guards and mechanical, electrical, or other types of safety devices;
- Read the safety notices placed on the machine and the safety information in this manual.

In the manual all safety notices are shown as follows:



WARNING: indicates following operations that are unsafe and can cause minor injury to persons and damage the lift, the vehicle or other property.



CAUTION: indicates possible danger that can result in serious injury to people and damage property.



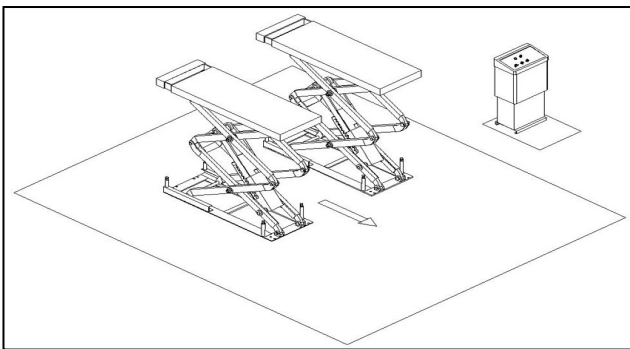
RISK OF ELECTRIC SHOCK: a specific safety notice placed on the lift in areas where the risk of electric shock is particularly high.

RISK AND PROTECTION DEVICES

We shall now examine the risks that operators or maintenance fitters may be exposed to when the vehicle is standing on the platforms in the raised position, together with the various safety and protection devices adopted by the manufacturer to reduce all such hazards to the minimum.

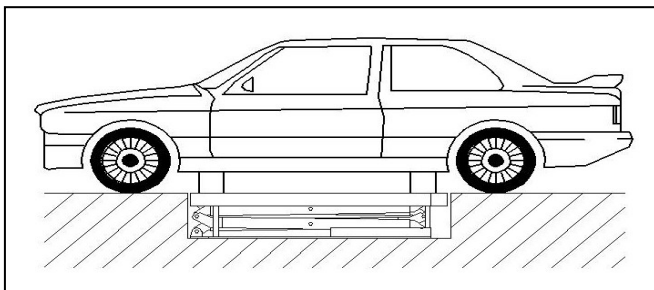
For optimal personal safety and safety of vehicles, observe the following regulations:

- Do not enter the safety and safety of vehicles are being lifted. (Picture 5)



Picture 5

- Make sure the vehicle is positioned correctly. (Picture 6)



Picture 6

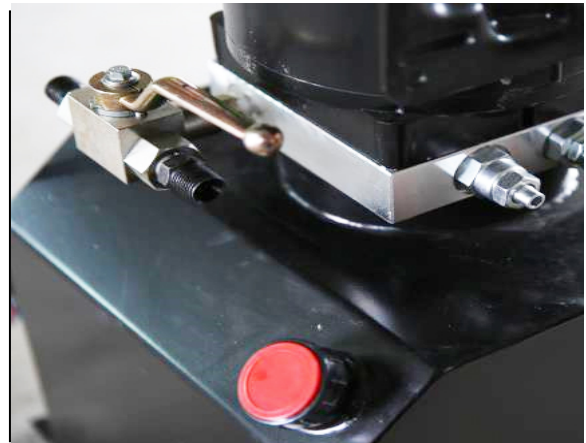
- Be sure to lift only approved vehicles, never exceed the specified carrying capacity, maximum height, and projection (vehicle length and width);

- Make sure that there are no person on the platforms during up and down movements and during standing.

GENERAL RISKS FOR LIFTING OR DESCENT:

The following safety equipments is used to protect over loading or the possibility of engine failure.

In the condition of over loading, the over-falling valve will open and directly return oil to the oil tank. (Picture 7)



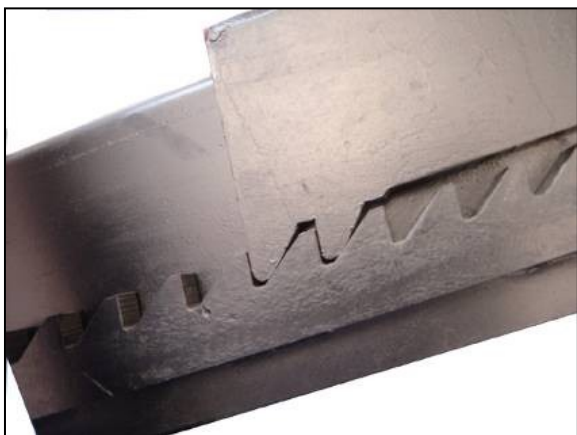
Picture 7. Over-falling Valve

Each bottom of oil cylinder is equipped with antiknock and locked valve. When the oil pipe is burst in the circuit of hydraulic pressure, the relevant antiknock and locked valve will work and limit the speediness of platform. (Picture 8)



Picture 8

Safety tooth and gear module are parts which guarantee the safety of personnel beneath the machine in failure condition of other protections. So make sure the integrity of gear module and that the safety tooth has occluded completely. (Picture 9)



Picture 9



There is nothing abnormal should be left on the safety modules to prevent safety gear from occlude normally.



RISKS FOR PERSONNEL

This heading illustrates potential risks for the operator, maintenance fitter, or any other person present in the area around the lift, result from incorrect use of the lift.



RISKS FOR EXTRUSION

During up and down operations, personnel leave the said area without following the rule and instruction.

During up and down operations, no person is admitted to work beneath the movable parts of the lift, should work in the safe zone. (Picture 5)



RISK OF IMPACT

Before the operator begins up and down movements, make sure that there are no personnel inside the danger zone. When, due to operational reasons, the lift is stopped at relatively low elevations (lower than 1.75m above the ground) personnel must be careful to avoid impact with parts of the machine not marked with special colors.



RISK OF FALLING OFF (PERSONNEL)

During up and down operations, personnel are prohibited from entering the platforms and the vehicle to avoid falling off.



RISK OF FALLING (VEHICLE)

This hazard may arise in the case of incorrect positioning of the vehicle on the platforms, overweight of the vehicle, or in the case of vehicles of dimensions that are not compatible with the capacity of the lift.



The photocell does not work well to let the lift platforms do not in the same level.

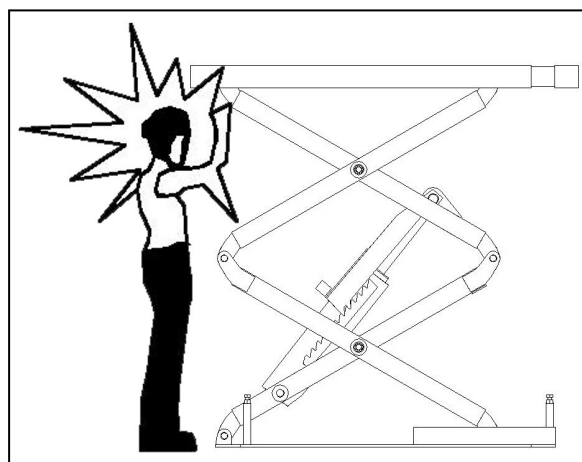
When the platform is being tested, the vehicle engine can not be turned on.

There is nothing should be placed on the lift-lowering area and the movable parts of the lift.

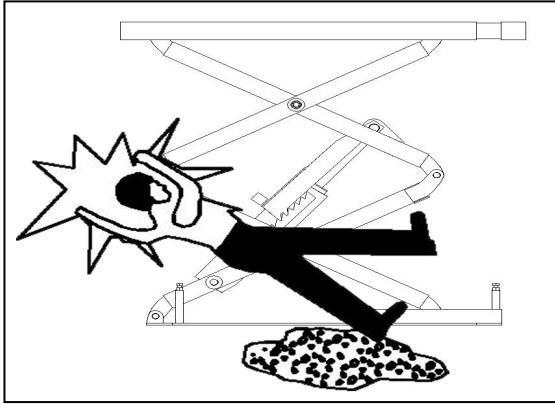


RISK OF SLIPPING

Caused by lubricant contamination of the floor around the lift. The area beneath and immediately surrounding the lift and also the platforms must be kept clean. Remove any oil spills immediately.



Picture 10. Risk of Impact



Picture 11. Risk of Slipping



RISK OF ELECTRIC SHOCK

Risk of electric shock in areas of insulated and shattered electric equipments.

Do not use jets of water, steam solvents or paint next to the lift, and take special care to keep such substances clear of the electrical control panel.



RISKS RELATED TO INAPPROPRIATE LIGHTING

The operator and the maintenance fitter must be able to assure that all the areas of the lift are properly and uniformly illuminate compliance with the laws in force in the place of installation.

During up and down operations, the operator should continually observe the lift and can operate it only in the position of operator. When lifting and lowering the vehicle, the cushion needs being put in the bottom of chassis.



The handling of safety devices is strictly forbidden. Never exceed the maximum carrying capacity of the lift, make sure the vehicles to be lifted have no load.



It is therefore essential to adhere scrupulously to all regulations regarding use, maintenance and safety contained in this manual.

4. INSTALLATION

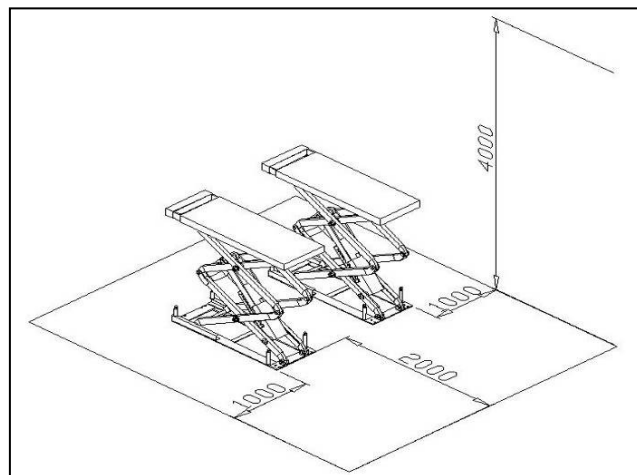


SKILLED AND AUTHORIZED PERSONNEL ONLY SHOULD BE ALLOWED TO PERFORM THESE OPERATIONS, FOLLOW ALL INSTRUCTIONS SHOWN BELOW CAREFULLY, IN ORDER TO PREVENT POSSIBLE DAMAGE TO THE CAR LIFT OR RISK OF INJURY TO PEOPLE.

Skilled technicians only, appointed by the same manufacturer or by authorized dealers, are allowed to install the car lift.

INSTALLATION REQUIREMENTS

- The car lift must be installed according to the specified safety distances from walls, pole and what other equipments stated.
- The specified safety distances from walls must be 1000 mm at least, taking into consideration the necessary space to work easily. Because space for the control site and for possible runways in case of emergency is also necessary.
- The room must be previously arranged for the power supply and pneumatic feed of the car lift.
- The room must be 4000 mm in height, at least.
- The car lift can be placed on any floor, as long as it is perfectly level and sufficiently resistant. ($\geq 250\text{kg}/\text{cm}^2$, the thickness of concrete $\geq 150\text{mm}$)
- All parts of the machine must be uniformly lit with sufficient light to make sure that the adjustment and maintenance operations can be performed safely, and without reflected light, glare that could give rise to eye fatigue.
- The integrity of arrived goods should be checked before the lift is installed.
- Moving and installing lift should follow the process as the picture instructs.

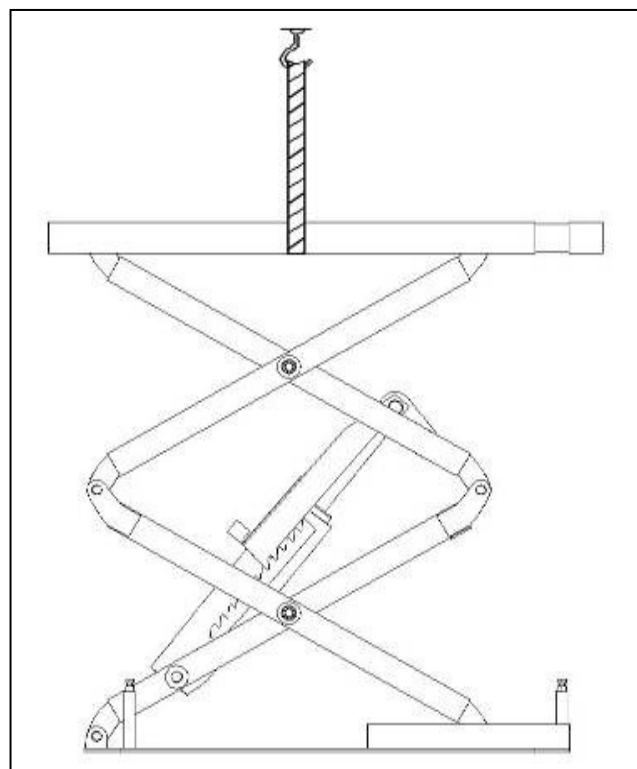


Picture 12

The transport and storage of machine refers to **TRANSPORT AND STORAGE** on page one.

Platform Installation:

- Place two lift platforms on the position of the location
- The bottom of oil cylinder is located in the frontage of machine (the direction of getting on the vehicle)
- Use fork car or other lifting equipments to lift the platform (Picture13) and make sure that the safety equipment of machine is both turned on and locked.



Picture 13

To avoid failure of machine safety equipment, can insert a wood in the middle part of joint-pole.



Prohibit working beneath the lift when hydraulic system is not completely equipped with hydraulic oil and take the action of up and down operations.

- When moving the lift platform, adjust the space between two platforms, make sure that the two platforms are parallel.

LINE CONNECTION

Connect the electrical and oil line according to the **ELECTRIC WIRING DIAGRAM** and **OIL LINE CONNECTION**.

Only after connecting the hydraulic system can connect the air loop, can not damage oil pipe, wire, and gas pipe.



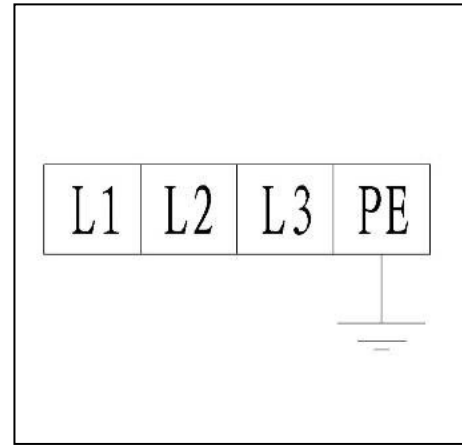
In the process of connecting oil pipe and gas pipe, pay particularly attention to the protection of pipe tie-in to prevent abnormal thing from entering oil loop and gas loop, then damaging hydraulic system.

ELECTRIC CIRCUIT CONNECTION



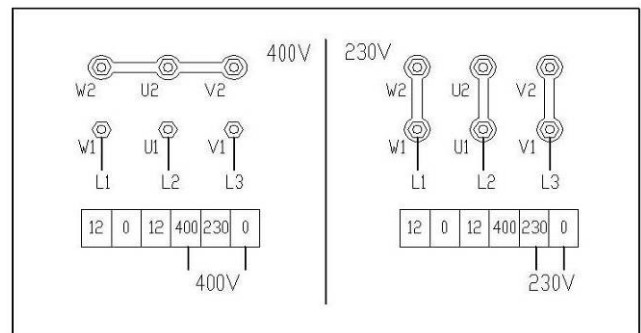
Only skilled special person is allowed to perform the operations.

- Open the control box' front cover
- Connection of power supply: the 400VAC three-phase and four-line connection wires (4×2.5mm² cable wire) for power supply are connected to L1,L2,L3, and PE labeled entering-wire terminal in control box. The PE ground wire is connected under the bolt marked ground firstly (Picture 14) and then connected under the bolt marked ground of two platforms.



Picture 14

- If the lift is operated at 230V three-phase, change the connection on the transformer and motor. (Picture 15)



Picture 15

- Connection of photocell: connect the brown and black wires together to no. 103 in the terminal, the white wire to no. 107 and the blue wire to no. 100.

HYDRAULIC PIPELINE CONNECTION

Follow **OIL LINE DIAGRAM** to connect the hydraulic oil pipes.



Only skilled and authorized person is allowed to perform the operations. And pay particularly attention to the protection of vita head.

- Following vitta number to lead the high-pressure vitta out from the “working stop valve G” and two “oil make-up stop valve H, I” of control box and then connect it to oil cylinder. (Refer to **OIL LINE DIAGRAM**)

- When connecting vitta, pay attention to the protection of vitta tie-in to prevent impurities from entering hydraulic circuit.



When connecting the vitta, be care of the mistake of each vitta number.

During the standard installation, control box is in the nearside of vehicle-entering direction. If placed on the right should adjust relevant vitta.

COMPRESSED AIR PIPE CONNEVTION

Follow **GAS LOOP DIAGRAM** to connect gas loop.



Only skilled and authorized person is allowed to perform the operations.

- Connect $\Phi 8 \times 6$ compressed air supply pipe to the air supply jaws of pneumatic electromagnetic valve inside the control box. (Picture16)



Picture 16



Picture 17

- Pay attention to the protection of windpipe tie-in to
- prevent impurities from entering compressed air circuit.
- Connect compressed air pipe to the extra-installed grease separator which is in front of control box to prolong the life of pneumatic components and the reliability of action.



In the process of windpipe installation, the windpipe can not be folded or tied to avoid that the gas loop is not smooth or it is jammed.

Before leading the compressed air supply pipe to the air supply jaws of pneumatic electromagnetic valve inside the control box, should extra install grease separator to separate compressed air, avoiding the failure of pneumatic cell action.

- Follow **GAS LOOP DIAGRAM** to lead the compressed air pipe out from pneumatic electromagnetic valve and then connect it to the uplifted-pawl air valve. (Picture 17)

5. ADJUSTMENTS



Add oil and check the order of phase.

After installing lift as Picture 3 required and connecting hydraulic circuit, electric circuit and gas loop, operate it as following:

- Open the hydraulic oil tank, add 18L of hydraulic oil into the oil tank, the hydraulic oil is provided by the user.



Picture 18



Make sure the clean of hydraulic oil, prevent any impurity into the oil line, lead the digest of the oil line and no working of the solenoid valve.

- Press the “power” button to turn on power, clicking the “up” button, check whether the motor turns clockwise (looking downward), if not press “power” button, change the phase of the motor.
- Turn on gas power

When turn on power, the high voltage will exist in the control box, only authorized person can operate it.

Oil make-up adjustment

Picture 19

Check: whether the locations of two safety-pawl equipments are agile and reliable, oil leakage of the oil line and air tightness of the air loop.

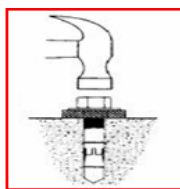
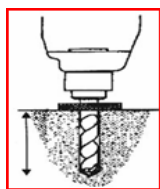
- Close the oil make up stop valve “H” and open the oil make up stop valve “G”
- Press “lift” button SB1, and thus the left platform (looking from machine head direction) is lifted to about 1000mm.
- Press the “lower” button SB2 to lower the left platform to the lowest position.
- Then lift it up to approximately 1400mm.
- Open the oil make up stop valve “H” and close the oil make up stop valve “G”.
- Press “up” button SB1, and the right platform (looking from machine head direction) is lifted to about 1000 mm.
- Press “lower” button. “SB2”, lower the platform to the lowest position.
- Repeat the lifting and lowering process for 6-7times to vent air automatically.
- Then lift the right platform to 1400mm. (two platforms of the main machine are lifted to the same height).
- End close the oil make up stop valve “H” and open the oil make up stop valve “G”.
- Turn right opening the “PHOTO” button to let the photocell working to protect the lift only to be operated at the same level.

GROUND BOLTS INSTALLATION



The ground bolts installation must start after the expiry date on the maintenance of concert, otherwise, it will affect the quality of solidity.

- Adjust the parallel of the platform and the distance of two platform as Picture 4 requires.
- Fix the anchor bolts with a percussion electric drill (percussion drill bit is of 16), drill to 120mm hole and clean the hole. (Picture 20)

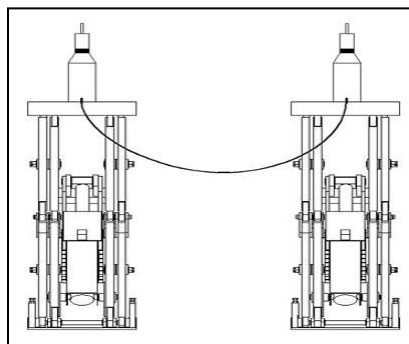
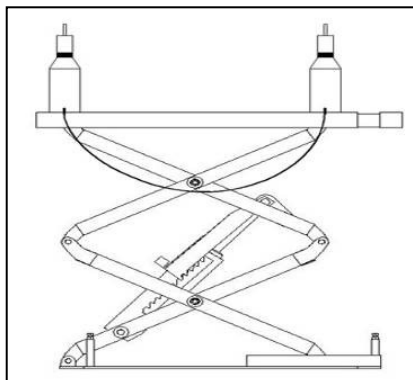


Picture 20

- Use light hammer to install the ground bolts into the hole (need not install the central expanded nail of ground bolts, install it after level adjustment.)

Level adjustment

- By using a level bar and the horizontal pipe and adjusting the adjustment screws at tow sides of the base plate.
- If platform unevenness is resulted from basic unevenness, use iron block to fill up the low place.
- After level adjustment, insert the central expanded nail of ground bolts and use heavy hammer to hammer it.
- Screw down the ground bolts cap.



Picture 21 Level Adjustment



When the expiry date on the maintenance of concrete hasn't arrived, can not install the central expanded nail of ground bolts.

The gap between the base plate and ground after adjustment must be filled with iron plate or concrete.

No load of main machine test:

- Turn on the power QS.
- Press "up" button SB1, pay attention to the synchronization and placidity of the lifting.
- Check whether safety pawl is correctly located.
- Check whether the oil line and the gas line are leakage.



When testing the lift, no person or other things are allowed to stand or be put near the two sides and beneath the machine. If any abnormal is found, press button "SB0" to stop it timely. After clearing obstacles, do the test again.

Load of machine test:

- Drive the vehicle whose weight doesn't exceed maximum lift weight to the platform, and then the driver leave it.
- Put the lift rubber cushion on the nuchal-seat.
- Press "up" button SB1, lift the platform and pay attention to the synchronization and placidity of the lifting.

- Check whether safety pawl is correctly located.
- Check whether the oil line and the gas line are leakage.



When beginning load of machine test, no person or other things are allowed to stand or be put near the two sides and beneath the machine.

Test vehicle whose weight doesn't exceed maximum lift weight.

Check whether the oil line and the gas line are leakage. If any abnormal is found, press button "SB0" to stop it timely. After clearing obstacles, do the test again.

6. OPERATIONS

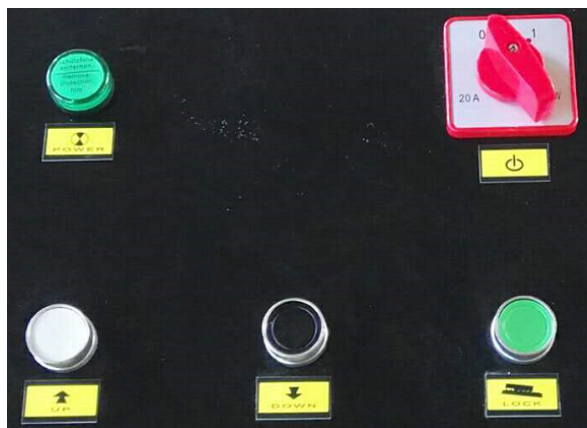


Only skilled and having been trained personnel is allowed to perform the operations. Check proceedings as following.

Operation Notices:

- Clear obstacles around the lift before operation.
- During lifting or lowering, no person is allowed to stand neat the two sides and beneath the machine, and no person is allowed on the two platform.
- Avoid lifting super heavy vehicles or other goods.
- When lifting vehicle, the chassis of the vehicle should be filled up with rubber cushion.
- Pay attention to the synchronization of the lifting and lowering. If any abnormal is found, stop the machine timely, check and remove the trouble.
- When lowering vehicle, lift the platform a bit firstly, notice that whether two safety pawls and safety teeth have been disengaged completely. If not, stop lowering.
- When the equipment is not used for a long time or over night, the machine should be lowered to the lowest position on ground, and remove vehicle, and cut off power supply.

Instructions on electric operation: (see the operation panel)



Picture 22

LIFTING:

- Press “lift” button SB1, the oil pump will work immediately, hydraulic oil is sent to hydraulic cylinder through “the work stop valve”, the platform is being lifted and the safety pawl is also lifted because of gas loop.
- Release button SB1, the oil pump will stop immediately, the platform stops lifting and the safety pawl falls on the safety gear because electromagnetic gas-valve is out of electricity and then close the gas loop.

DESCENT:

- Press “DOWN” button SB2, the safety pawl will be lifted by joint gas loop and lowering electromagnetic valve opens because of electricity. The platform is lowing, release button SB2, stop lowering, the safety pawl falls on the safety gear.

EMERGENCY STOP:

When the machine has abnormal or car maintenance, push “emergency stop” button “SB0” and locking, cut off all the operation circuit, other operation can not be work.

NOT IN-PHASE STOP MACHINE:

When two platforms are not at the same height during lifting and lowering operations, photo-electricity leveling equipment will stop working immediately. According to the following process to adjust the platform level, only after two platforms are at the same height can put them into use.

Oil make-up “adjust” operation (normal service period):



After completion of machine installation and adjustment in the application process, the right platform is lower than the left one because of air in the oil cylinder not being excluded completely normal looses or leakage of the hydraulic oil.



When conducting oil make-up operation, the platforms must not be load.

- Open the oil make up stop valve “H” on the main machine and close the oil make up stop valve “G” on the main machine.
- Press “up” button SB1, two platforms of the main machine are lifted to the same height.

End close the oil make up stop valve “H” and open the oil make up stop valve “G”.

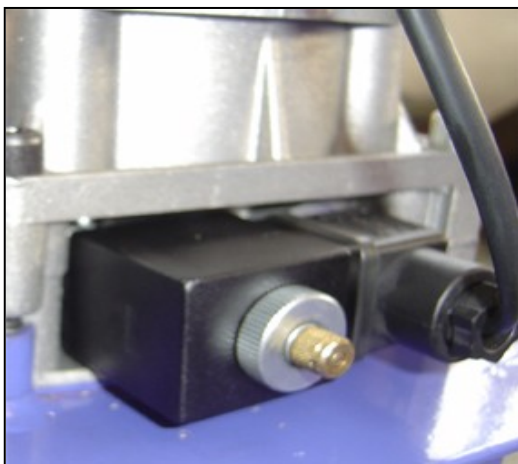
EMERGENCY MANUAL OPERATION FOR LOWERING (POWER FAILURE):



When lowering through manual operation, should observe the condition of platform at any time because there are vehicles on the platform. If there is something abnormal, screw down oil loop valve immediately.

The process of manual operation:

- Firstly lift two safety pawls of platform and use thin iron bar to fill up it.
- Switch off the power button (avoid abruptly incoming electricity). Open the back cover of control box to find the electromagnetic valve A for lowering.
- Loosen manual oil loop stud at the end of lowering electromagnetic valve core, then the platform begins lowering.
- After the machine has been lowered, screw down manual oil loop stud timely, the process of manual lowering comes to the end.



Picture 23

7. MAINTENANCE AND CARE



Skilled personnel only is allowed to perform the operations.

- All bearings and hinges on this machine must be lubricated once a week by using an oiler.
- The safety gear, the upper and lower sliding blocks and other movable parts must be lubricated once a month.
- The hydraulic oil must be replaced one time each year. The oil level should always be kept at upper limit position.



The machine should be lower to the lowest position when replace hydraulic oil, then let the old oil out, and should be filter the hydraulic oil.

- Each team checks the agility and reliability of pneumatic safety equipment.

8. FAILURE AND RESOLUTIONS



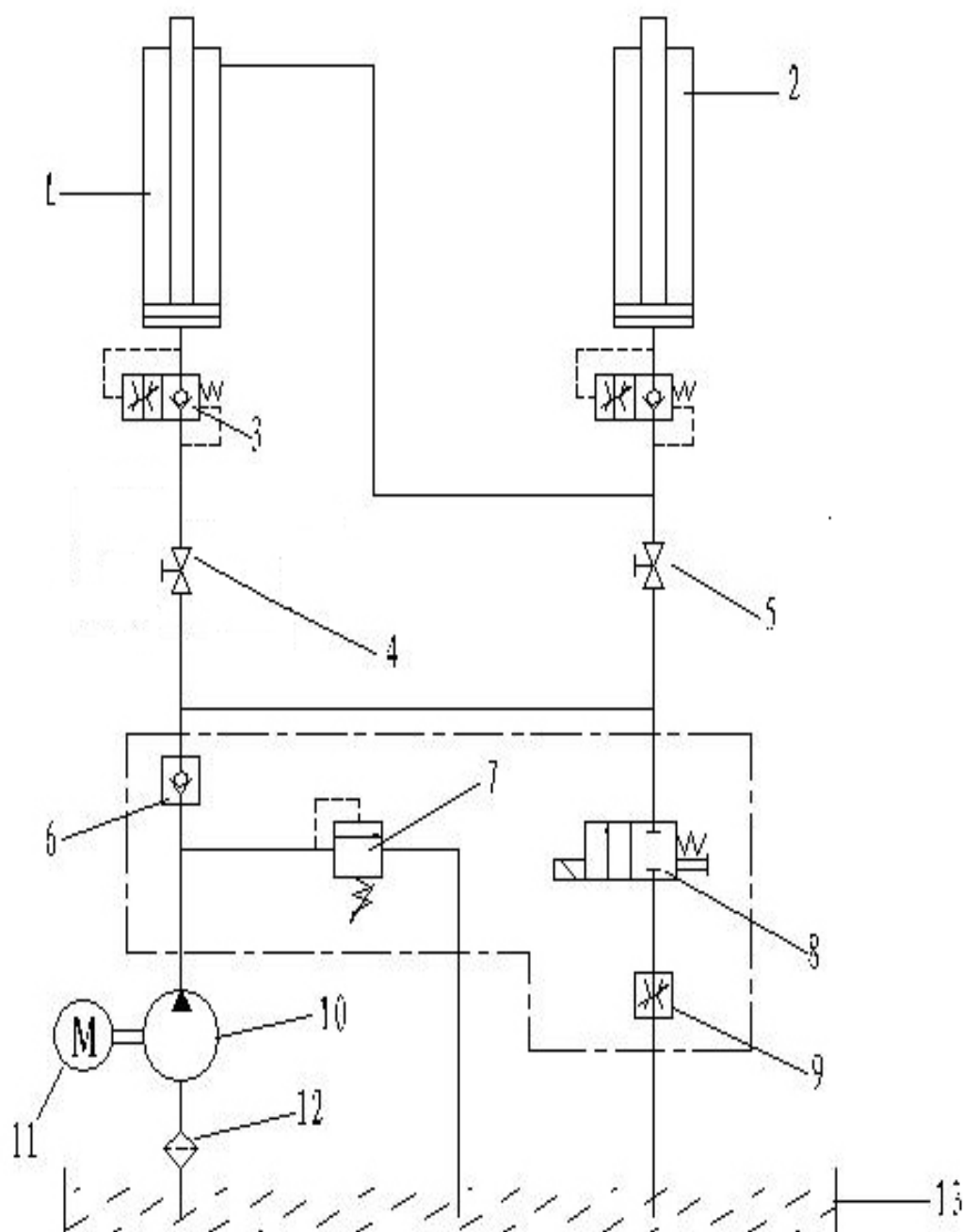
Skilled personnel only is allowed to perform the operations.

See the following pages.

Failure Phenomena	Cause and Phenomena	Resolutions
The motor does not run in lifting operation.	Connection of power supply wires is not correct.	Check and correct wire connection
	The AC contactor in the circuit of the motor does not pick up.	If the motor operates when forcing the contactor down with an isolation rod, check the control circuit. If the voltage at two ends of the contactor coil is normal, replace the contactor.
	The limit switch is not closed.	Check the limit switch, wires and adjust or replace the limit switch.
In lifting operation, the motor runs, but there is no lifting movement	The motor turns reverse.	Change the phases of the power supply wires.
	Lifting with light load is normal but no lifting with heavy load.	The set safe pressure of the over-flow valve may be increased by turning the set knob right ward slightly. The spool of the lowering solenoid valve is stuck by dirt. Clean the spool.
	The amount of hydraulic oil is not enough.	Add hydraulic oil.
	The “operation stop valve” is not closed.	Screw down the “Operation stop valve”
When press “Lower” button, the machine is not lowered	The safety pawl are not released form the safety teeth.	First lift a little and then lowering
	The safety pawl is not lifted.	The air pressure is not enough, the safety pawl is stuck or the gas pipe is broken off, adjust pressure, check the gas pipe and replace it.
	The solenoid air valve does not work.	If the solenoid air valve is energized, but does not open the air loop, check or replace the solenoid air valve.
	The lowering solenoid valve is energized but does not work.	Check the plug and coil of the lowering solenoid valve and check the right turn tightness of its end copper nut and so on.
	The “antiknock valve” is blocked.	Remove the “antiknock valve” from the oil supply hole at the bottom of the oil cylinder, and clean the “antiknock valve”.
The machine lowers extremely slowly under normal loads.	The hydraulic oil has too high viscosity or frozen, deteriorated (in Winter).	Replace with hydraulic oil in accordance with the instruction book.
	The “antiknock valve” for preventing oil pipe burst is blocked.	Remove or close air supply pipe and thus lock the safety pawl of the machine without lifting of the safety pawl. Remove the “antiknock valve” from the oil supply hole at the bottom of the oil cylinder, and clean the “antiknock valve”.
The right and left platforms are not synchronous and not in the same height.	The air in the oil cylinder is not vent completely.	Refer to “7. Oil Make-up ‘Adjust’ Operation”.
	Oil leakage on oil pipe or at its connections.	Tighten oil pipe connections or replace oil seals and then make-up oil and adjust levelness.
	The “oil make-up stop valve” can not be closed tightly and almost make-up oil and adjust every day.	Replace oil make-up stop valve, and then make-up oil and adjust.
Noisy lifting and lowering.	Lubrication is not enough.	Lubricate all hinges and motion parts (including piston rod) with machine oil
	The base or the machine is twisted.	Adjust again the levelness of the machine, and fill or pad the base.

APPENDIX 1

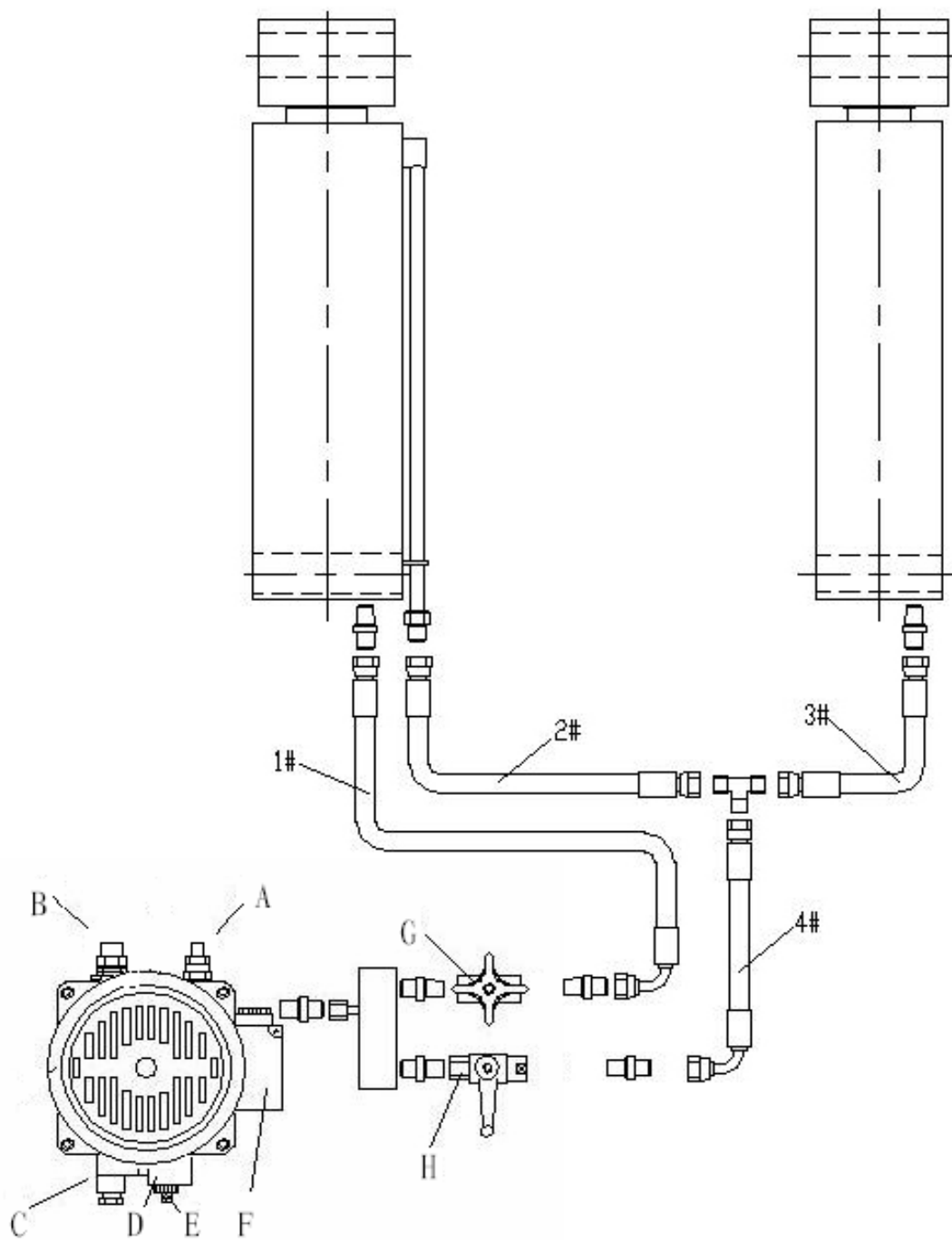
HYDRAULIC PRINCIPLE DIAGRAM



1. main cylinder	8. Descent Valve
2. Sub Cylinder	9. Throttling Valve
3. Stop Valve	10. Gear Pump
4. Stop Valve	11. Pump Motor
5. Stop Valve	12. Filter
6. One-way Valve	13. Filter
7. Overflowing Valve	

APPENDIX 2

HOSE CONNECTION DIAGRAM



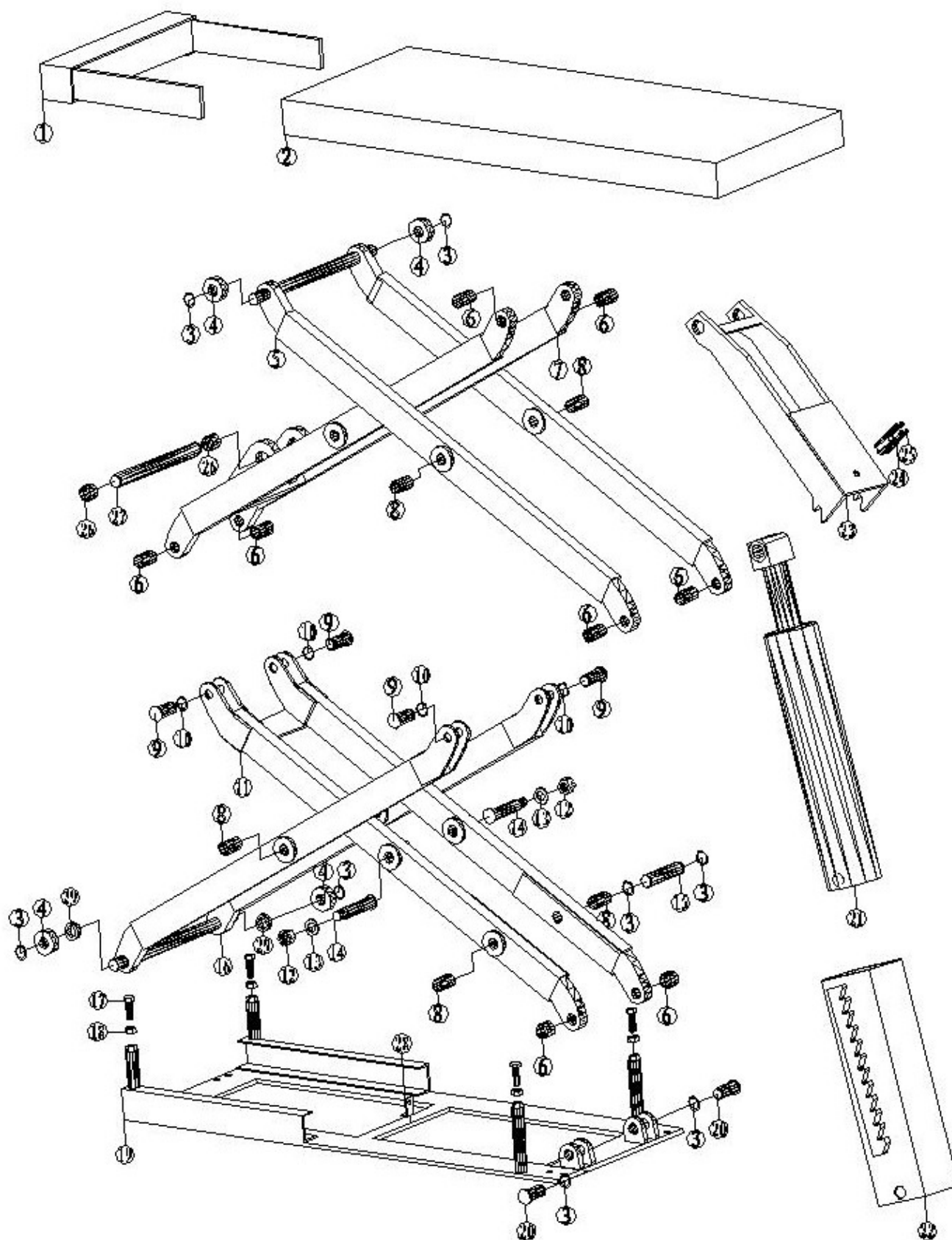
1.1#~4# high pressure pipe

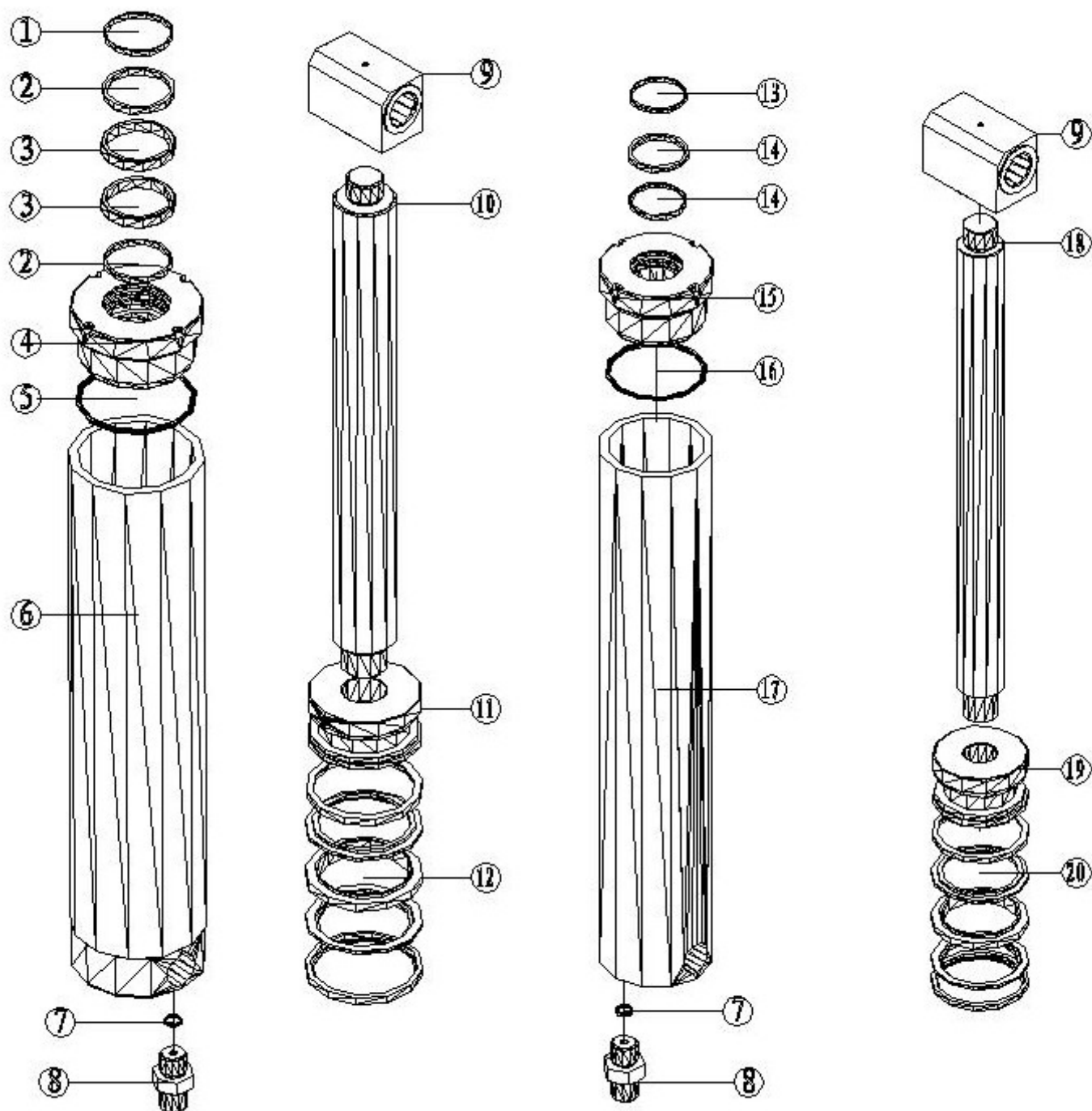
2. A: descent valve; B: manual descent knob; C: valve plug; D: motor; E: overflowing valve; F: joint wire box;

G: adjusting valve; H: the oil make-up stop valve

APPENDIX 3

EXPLOSIVE DIAGRAM





WARRANTY

The structural components on your new automotive lift are warranted for three years on equipment. Operating components are warranted one year to the original purchaser, to be free of defects in material and workmanship.

The manufacturer shall repair or replace at their option for this period those parts returned to the factory freight prepaid which prove after inspection to be defective.

This warranty only applies to the original purchaser of the equipment. This warranty does not extend to defects caused by ordinary wear, abuse, misuse, shipping damage, or damage as the result of improper maintenance.

This warranty is exclusive and in lieu of all other warranties expressed or implied.

In no event shall the manufacturer be liable for special, consequential or incidental damages for the breach or delay in performance of the warranty.

The manufacturer reserves the right to make design changes or add improvements to its product line without incurring any obligation to make such changes on product sold previously.

